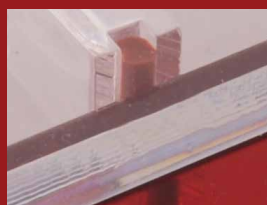


- Finger grooves on the tray sides for easy handling
- Wide range of comb configurations
- Selected units available with buffer recirculation capabilities
- Combs specifications clearly marked on each comb
- Advanced casting systems
- UV transmissible gel trays with
  - Built-in fluorescent rulers
  - Multiple comb slots
- High quality 9mm thick rugged acrylic construction
- Interlocking lid
- Protected sockets with permanently attached power cords
- Epoxy sealed electrode connections, resist corrosion and leaks
- Gold plated banana plugs
- Meets or exceeds IEC1010-1 standards



With the EHS3000 series Consort is introducing a new high quality standard for electrophoresis tanks. Every tank is designed and produced with much care for the customer. The tanks are made completely from cast acrylic ensuring a high material quality.

Various features, innovations and details make this tank easy to use, elegant and very durable.



### Automatic buffer recirculation (available on selected units)

Reduces detrimental ion and pH gradients in your buffer, providing even migration for long running gels. Hydrogen bubbles created at the cathode carry buffer along a canted recirculation tube, providing a gentle, reliable and self-contained recirculation system that is self-regulating and requires no additional tubing or equipment.



### RapidCast™ gel casting technology

Ideal for most small gel units with trays that are approximately equal in width and length. The dimensions of all cast-in-place gel trays are adjusted so that when the tray is placed cross-ways in the gel tank, the gasketed ends of the gel tray fit precisely against the walls of the buffer chamber. This forms a leak-proof seal for quick gel pouring.

Turn tray crossways in the gel base to seal and pour.  
Align with the platform to run. No tape! No Leaks! Fast & Efficient.



### ExpressCast™ gel casting technology

High throughput / high resolution systems require gel trays too long to fit crossways in the gel tank. For easy tapeless casting with these units, the ExpressCast™ system has been developed. ExpressCast trays incorporate removable gasketed end gates. These end gates fit into slots at both ends of the tray, to form a quick leak-proof seal for gel casting. Because the length of ExpressCast trays is not constrained by the width of the gel unit, these trays can accommodate longer run lengths or more sample capacity.

ExpressCast trays are also compatible with gel units from many other manufacturers.

ExpressCast™ trays include end slots into which fit gasketed end gates, for easy in-tray gel casting. Fit end gates into trays for a quick and leak-proof seal. No tape! No Leaks! Fast & Efficient.

Code	Description
EHS3100-SYS	Mini horizontal unit, gasketed UVT gel tray 7x8 cm + 2 combs (6, 10), RapidCast technology.
EHS3200-SYS	Mini horizontal unit, gasketed UVT gel tray 9x11 cm + 2 combs (10, 14), RapidCast technology.
EHS3300-SYS	Mini horizontal unit, gasketed UVT gel tray 12x14 cm + 2 combs (12, 20), RapidCast technology.
EHS3350-SYS	Mini horizontal unit, gasketed UVT gel tray 12x14 cm + 2 combs (12, 20), RapidCast technology. Buffer Recirculation.
EHS3400-SYS	Wide horizontal unit, UVT gel tray 15x15 cm + end gates + 4 combs (2x 17, 2x34). ExpressCast technology.
EHS3410-SYS	Long horizontal unit, UVT gel tray 15x25 cm + end gates + 4 combs (2x 17, 2x34) + leveling screws + bubble level. ExpressCast technology.
EHS3500-SYS	Wide horizontal unit, UVT gel tray 20x25 cm + end gates + 3 combs (16, 24, 36) + leveling screws + bubble level. ExpressCast technology.
EHS3600-SYS	Wide horizontal unit, UVT gel tray 23x14 cm + end gates + 4 combs (4x 50) + leveling screws + bubble level. ExpressCast technology.
EHS3610-SYS	Maxi horizontal unit, UVT gel tray 23x25 cm + end gates + 4 combs (2x 25, 2x50) + leveling screws + bubble level. ExpressCast technology.
EHS3660-SYS	Maxi horizontal unit, UVT gel tray 23x25 cm + end gates + 4 combs (2x 25, 2x50) + leveling screws + bubble level. ExpressCast technology. Buffer Recirculation.
EHS3620-SYS	Ultra horizontal unit, UVT gel tray 23x40 cm + end gates + 4 combs (2x 25, 2x50) + leveling screws + bubble level. ExpressCast technology.



With the EHS3xxx series Consort is introducing a new high quality standard for electrophoresis tanks. Every tank is designed and produced with much care for the customer. The tanks are made completely from cast acrylic ensuring a high material quality.

Various features, innovations and details make this tank easy to use, elegant and very durable.

### Convenient & Versatile

- UV transmissible gel trays with built-in fluorescent rulers.
- Machined finger grooves on the tray sides for easy and sure handling.
- Wide range of comb configurations, including multi-channel capability.
- Selected units available with buffer recirculation capabilities.
- Combs specifications clearly marked on each comb.
- Advanced casting systems for flexibility, convenience and speed.

All EHS3xxx-series trays feature multiple comb slots, built-in fluorescent rulers and ultra-strong assembly methods for long, reliable service.

### Safe & Reliable

- High quality 9mm thick rugged acrylic construction, resists cracking and warping.
- Your safety ensured with interlocking lid, protected sockets and permanently attached power cords.
- Epoxy sealed electrode connections, resist corrosion and leaks.
- Gold plated banana plugs.
- Meets or exceeds IEC1010-1 standards.

### RapidCast™ gel casting technology

The RapidCast™ system is ideal for most small gel units with trays that are approximately equal in width and length. The dimensions of all cast-in-place gel trays are adjusted so that when the tray is placed cross-ways in the gel tank, the gasketed ends of the gel tray fit precisely against the walls of the buffer chamber. This forms a leak-proof seal for quick gel pouring. This system can also be used with RapidCast casters, for casting outside the buffer tank. A long-lived silicone rubber gasket ensures a reliable seal thru many gel castings and side grooves on all RapidCast trays provide for easy handling.

RapidCast™ Technology uses trays with incorporated end gaskets, to easily cast gels in the gel unit base. Turn tray crossways in the gel base to seal and pour. Align with the platform to run. No tape! No Leaks! Fast & Efficient.

### ExpressCast™ gel casting technology

High throughput / high resolution systems require gel trays too long to fit crossways in the gel tank. For easy tapeless casting with these units, the ExpressCast™ system has been developed. ExpressCast trays incorporate removable gasketed end gates. These end gates fit into slots at both ends of the tray, to form a quick leak-proof seal for gel casting. Because the length of ExpressCast trays is not constrained by the width of the gel unit, these trays can accommodate longer run lengths or more sample capacity.

ExpressCast trays are also compatible with gel units from many other manufacturers.

ExpressCast™ trays include end slots into which fit gasketed end gates, for easy in-tray gel casting. Fit end gates into trays for a quick and leak-proof seal. No tape! No Leaks! Fast & Efficient.

### Integrated buffer recirculation (available on selected units)

Automatic buffer recirculation reduces detrimental ion and pH gradients in your buffer, providing even migration for long running gels. Hydrogen bubbles created at the cathode carry buffer along a canted recirculation tube, providing a gentle, reliable and self-contained recirculation system that is self-regulating and requires no additional tubing or equipment.



<b>Gel dimensions</b>	7x8 cm
<b>Buffer volume</b>	400ml
<b>Gel volume (at 0.5cm)</b>	28ml
<b>Sample Capacity</b>	24
<b>Comb Slots</b>	2
<b>Sample runs</b>	1 or 2
<b>Unit Dimensions</b>	12x17.6x9.5 cm
<b>Running condition</b>	60V at 5V/cm
<b>UV transmissible gel tray</b>	
<b>RapidCast</b>	
<b>Warranty</b>	36 months
<b>Recommended power supply</b>	
<b>EV2450</b>	



## ● Description

The EHS3100 mini gel systems are ideal for quick resolution of analytes from PCR, RE digestion, ligation and other common laboratory reactions.

### Features

RapidCast™ gel casting technology.

Heavy duty lower buffer chamber and Interlock safety lid with attached leads.

Buffer chamber with color coded, sealed platinum electrodes and non-slip rubber feet.

UV transmissible gel tray with long-life silicone gaskets, built-in fluorescent ruler and 2 comb slots.

Safety cover with attached retractable-sheathed power cords.

Wide range of combs and accessories available.

## ● Ordering codes

Code	Description
<b>EHS3100-SYS</b>	Mini horizontal unit gasketed UVT gel tray 7x8 cm 1 comb: 6 sample, 1.5mm 1 comb: 10 sample, 1.5mm

### Combs

Code	Description	Sample volume
<b>EHS3100-C5-1.0</b>	1 mm thick, 5 sample	25 µl
<b>EHS3100-C6-1.0</b>	1 mm thick, 6 sample	20 µl
<b>EHS3100-C8-1.0</b>	1 mm thick, 8 sample	14 µl
<b>EHS3100-C10-1.0</b>	1 mm thick, 10 sample	11 µl
<b>EHS3100-C12-1.0</b>	1 mm thick, 12 sample	8 µl
<b>EHS3100-C5-1.5</b>	1.5 mm thick, 5 sample	38 µl
<b>EHS3100-C6-1.5</b>	1.5 mm thick, 6 sample	31 µl
<b>EHS3100-C8-1.5</b>	1.5 mm thick, 8 sample	22 µl
<b>EHS3100-C10-1.5</b>	1.5 mm thick, 10 sample	16 µl
<b>EHS3100-C12-1.5</b>	1.5 mm thick, 12 sample	12 µl

### Preparative Combs

Code	Description	Sample volume
<b>EHS1100-PREP</b>	1.5mm, preparative	193 µl

### Replacement parts & Accessories

Code	Description
<b>EHS3100-TRAY</b>	Gasketed UVT gel tray 7x8 cm
<b>EHS3100-GASKET</b>	Replacement gasket (set of 2)
<b>EHS3100-CAST</b>	Multiple Casting Chamber (holds 3 UVT trays)
<b>EHS3100-CAST3T</b>	Multiple Casting Chamber including 3 UVT trays 7x8 cm

<b>Gel dimensions</b>	9x11 cm
<b>Buffer volume</b>	600ml
<b>Gel volume (at 0.5cm)</b>	50ml
<b>Sample Capacity</b>	36
<b>Comb Slots</b>	2
<b>Equidistant sample runs</b>	1 or 2
<b>Unit Dimensions</b>	15x22x9.5 cm
<b>Running condition</b>	90V at 5V/cm
<b>UV transmissible gel tray</b>	
<b>RapidCast</b>	
<b>Warranty</b>	36 months

**Recommended power supply**  
**EV2450**  
**EV2310**



## ● Description

The EHS3200 is a versatile mini-gel unit that offers a little more run length and capacity for restriction fragment and PCR amplicon analysis.

### Features

- RapidCast™ gel casting technology.
- Heavy duty lower buffer chamber and Interlock safety lid with attached leads.
- Buffer chamber with color coded, sealed platinum electrodes and non-slip rubber feet.
- UV transmissible gel tray with long-life silicone gaskets, built-in fluorescent ruler and 2 comb slots.
- Safety cover with attached retractable-sheathed power cords.
- Wide range of combs and accessories available.

## ● Ordering codes

### Complete System

Code	Description
<b>EHS3200-SYS</b>	Mini horizontal unit gasketed UVT gel tray 9x11 cm 1 comb: 10 sample, 1.5mm 1 comb: 14 sample, 1.5mm

### Combs

Code	Description	Sample volume
<b>EHS3200-C5-1.0</b>	1 mm thick, 5 sample	25 µl
<b>EHS3200-C8-1.0</b>	1 mm thick, 8 sample	20 µl
<b>EHS3200-C10-1.0</b>	1 mm thick, 10 sample	14 µl
<b>EHS3200-C12-1.0</b>	1 mm thick, 12 sample	11 µl
<b>EHS3200-C14-1.0</b>	1 mm thick, 14 sample	8 µl
<b>EHS3200-C5-1.5</b>	1.5 mm thick, 5 sample	38 µl
<b>EHS3200-C8-1.5</b>	1.5 mm thick, 8 sample	31 µl
<b>EHS3200-C10-1.5</b>	1.5 mm thick, 10 sample	22 µl
<b>EHS3200-C12-1.5</b>	1.5 mm thick, 12 sample	16 µl
<b>EHS3200-C14-1.5</b>	1.5 mm thick, 14 sample	12 µl

### Replacement parts & Accessories

Code	Description
<b>EHS3200-TRAY</b>	Gasketed UVT gel tray 9x11 cm
<b>EHS3200-GASKET</b>	Replacement gasket (set of 2)
<b>EHS3200-CAST</b>	Multiple Casting Chamber (holds 3 UVT trays)
<b>EHS3200-CAST3T</b>	Multiple Casting Chamber including 3 UVT trays 7x8 cm

### Microtiter Combs

Code	Description	Sample volume
<b>EHS3200-CMT9-1.0</b>	1 mm thick, 9 sample MC	16 µl
<b>EHS3200-CMT18-1.0</b>	1 mm thick, 18 sample MC	6 µl
<b>EHS3200-CMT9-1.5</b>	1.5 mm thick, 9 sample MC	24 µl
<b>EHS3200-CMT18-1.5</b>	1.5 mm thick, 18 sample MC	9 µl

### Preparative Combs

Code	Description	Sample volume
<b>EHS3200-PREP</b>	1.5mm, preparative	142 µl



<b>Gel dimensions</b>	12x14cm
<b>Buffer volume</b>	800ml
<b>Gel volume (at 0.5cm)</b>	84ml
<b>Sample Capacity</b>	100
<b>Comb Slots</b>	4
<b>Equidistant sample runs</b>	1 or 2
<b>Unit Dimensions</b>	18x24.5x9.5 cm
<b>Running condition</b>	115V at 5V/cm
<b>RapidCast</b>	
<b>UV transmissible gel tray</b>	
<b>Automatic Buffer Recirculation (EHS3350 only)</b>	
<b>Warranty</b>	36 months

**Recommended power supply**  
**EV2450**  
**EV2310**



**EHS3350-SYS**

### Description

The EHS3300 is our most popular mini-gel unit. A combination of outstanding versatility and value make it an ideal personal gel device. Two unit configurations are available including the new EHS3350 which includes integrated automatic buffer recirculation for improved performance. All systems feature RapidCast™ casting system for tapeless casting in the buffer chamber base or in optional casting frame.

#### Features

- RapidCast™ gel casting technology.
- Heavy duty lower buffer chamber and Interlock safety lid with attached leads.
- Buffer chamber with color coded, sealed platinum electrodes and non-slip rubber feet.
- UV transmissible gel tray with long-life silicone gaskets, built-in fluorescent ruler and 2 comb slots.
- Safety cover with attached retractable-sheathed power cords.
- Wide range of combs and accessories available.



**EHS3350-SYS**

### Ordering codes

#### Complete System

Code	Description
<b>EHS3300-SYS</b>	Mini horizontal unit gasketed UVT gel tray 12x14 cm 1 comb: 12 sample, 1.5mm 1 comb: 20 sample, 1.5mm
<b>EHS3350-SYS</b>	Mini horizontal unit with automatic buffer recirculation gasketed UVT gel tray 12x14 cm 1 comb: 12 sample, 1.5mm 1 comb: 20 sample, 1.5mm



**EHS3300-SYS**

#### Combs

Code	Description	Sample volume
<b>EHS3300-C8-1.0</b>	1 mm thick, 8 sample	25 µl
<b>EHS3300-C16-1.0</b>	1 mm thick, 16 sample	20 µl
<b>EHS3300-C20-1.0</b>	1 mm thick, 20 sample	14 µl
<b>EHS3300-C24-1.0</b>	1 mm thick, 24 sample	11 µl
<b>EHS3300-C8-1.5</b>	1.5 mm thick, 8 sample	38 µl
<b>EHS3300-C16-1.5</b>	1.5 mm thick, 16 sample	31 µl
<b>EHS3300-C20-1.5</b>	1.5 mm thick, 20 sample	22 µl
<b>EHS3300-C24-1.5</b>	1.5 mm thick, 24 sample	16 µl

#### Replacement parts & Accessories

Code	Description
<b>EHS3300-TRAY</b>	Gasketed UVT gel tray 12x14 cm
<b>EHS3300-GASKET</b>	Replacement gasket (set of 2)
<b>EHS3300-CAST</b>	Multiple Casting Chamber (holds 3 UVT trays)
<b>EHS3300-CAST3T</b>	Multiple Casting Chamber including 3 UVT trays 7x8 cm

#### Microtiter Combs

Code	Description	Sample volume
<b>EHS3300-CMT9-1.0</b>	1 mm thick, 9 sample MC	16 µl
<b>EHS3300-CMT12-1.0</b>	1 mm thick, 12 sample MC	6 µl
<b>EHS3300-CMT25-1.0</b>	1 mm thick, 25 sample MC	6 µl
<b>EHS3300-CMT9-1.5</b>	1.5 mm thick, 9 sample MC	24 µl
<b>EHS3300-CMT12-1.5</b>	1.5 mm thick, 12 sample MC	9 µl
<b>EHS3300-CMT25-1.5</b>	1.5 mm thick, 25 sample MC	6 µl

#### Preparative Combs

Code	Description	Sample volume
<b>EHS3300-PREP</b>	1.5mm, preparative	142 µl

<b>Gel dimensions</b>	15x15cm
<b>Buffer volume</b>	1020ml
<b>Gel volume (at 0.5cm)</b>	112ml
<b>Sample Capacity</b>	160
<b>Comb Slots</b>	6
<b>Equidistant sample runs</b>	1, 2, 3 or 4
<b>Unit Dimensions</b>	21x26x9.5 cm
<b>Running condition</b>	120V at 5V/cm
<b>UV transmissible gel tray</b>	
<b>ExpressCast</b>	
<b>Warranty</b>	36 months

**Recommended power supply**  
**EV2450**  
**EV2310**



## ● Description

The EHS3400 ExpressCast™ system is an ideal midi-gel unit for moderate thru-put sample analysis. This system features the ExpressCast gel casting system for quick, tape-free gel casting.

### Features

ExpressCast™ gel casting technology.

Heavy duty lower buffer chamber and Interlock safety lid with attached leads.

Buffer chamber with color coded, sealed platinum electrodes and non-slip rubber feet.

UV transmissible gel tray built-in fluorescent ruler and 6 comb slots.

Safety cover with attached retractable-sheathed power cords.

Wide range of combs and accessories available.

## ● Ordering codes

### Complete System

Code	Description
<b>EHS3400-SYS</b>	Wide horizontal unit UVT gel tray 15x15 cm , end gates 2 combs: 17 sample, 1.5mm 2 combs: 34 sample, 1.5mm

### Combs

Code	Description	Sample volume
<b>EHS3400-C10-1.0</b>	1 mm thick, 10 sample	25 µl
<b>EHS3400-C20-1.0</b>	1 mm thick, 20 sample	20 µl
<b>EHS3400-C40-1.0</b>	1 mm thick, 40 sample	14 µl
<b>EHS3400-C10-1.5</b>	1.5 mm thick, 10 sample	38 µl
<b>EHS3400-C20-1.5</b>	1.5 mm thick, 20 sample	31 µl
<b>EHS3400-C40-1.5</b>	1.5 mm thick, 40 sample	22 µl

### Microtiter Combs

Code	Description	Sample volume
<b>EHS3400-CMT17-1.0</b>	1 mm thick, 17 sample MC	16 µl
<b>EHS3400-CMT34-1.0</b>	1 mm thick, 34 sample MC	6 µl
<b>EHS3400-CMT17-1.5</b>	1.5 mm thick, 17 sample MC	24 µl
<b>EHS3400-CMT34-1.5</b>	1.5 mm thick, 34 sample MC	9 µl

### Replacement parts & Accessories

Code	Description
<b>EHS3400-TRAY</b>	UVT gel tray, 15x15 cm, with gasketed end gates
<b>EHS3400-DAM</b>	Casting Dam for 15cm Wide Gel Trays
<b>EHS3400-GATE</b>	End Gates, includes gasket (set of 2)
<b>EHS3400-GASKET</b>	Replacement Gasket (set of 2)

<b>Gel dimensions</b>	15x25cm
<b>Buffer volume</b>	1850ml
<b>Gel volume (at 0.5cm)</b>	188ml
<b>Sample Capacity</b>	112
<b>Comb Slots</b>	6
<b>Equidistant sample runs</b>	1, 2, 3 or 4
<b>Run lengths</b>	5.5, 7.5, 11.4 and 23,2 cm
<b>Unit Dimensions</b>	23.5x37.5x10.5 cm
<b>Running condition</b>	170V at 5V/cm
<b>UV transmissible gel tray</b>	
<b>ExpressCast</b>	
<b>Warranty</b>	36 months

**Recommended power supply**  
**EV2650**  
**EV2310**



## ● Description

The EHS3410 is a long run length mini-gel system. With a maximum run length of 25cm, the unit can provide high resolution of complex analytes. The EHS3410 features the ExpressCast gel casting system for quick, tape-free gel casting. The unit is manufactured with a levelling base that includes a built-in level and 3-point levelling using nylon screws for convenient level adjustment.

### Features:

- ExpressCast™ gel casting technology.
- Heavy duty lower buffer chamber and Interlock safety lid with attached leads.
- Buffer chamber with color coded, sealed platinum electrodes and non-slip rubber feet.
- UV transmissible gel tray with 6 comb slots.
- Safety cover with attached retractable-sheathed power cords.
- Wide range of combs and accessories available.

## ● Ordering codes

### Complete System

Code	Description
<b>EHS3410-SYS</b>	Long horizontal unit UVT gel tray 15x25 cm , end gates 2 combs: 17 sample, 1.5mm 2 combs: 34 sample, 1.5mm

### Combs

Code	Description	Sample volume
<b>EHS3400-C10-1.0</b>	1 mm thick, 10 sample	25 µl
<b>EHS3400-C20-1.0</b>	1 mm thick, 20 sample	20 µl
<b>EHS3400-C40-1.0</b>	1 mm thick, 40 sample	14 µl
<b>EHS3400-C10-1.5</b>	1.5 mm thick, 10 sample	38 µl
<b>EHS3400-C20-1.5</b>	1.5 mm thick, 20 sample	31 µl
<b>EHS3400-C40-1.5</b>	1.5 mm thick, 40 sample	22 µl

### Microtiter Combs

Code	Description	Sample volume
<b>EHS3400-CMT17-1.0</b>	1 mm thick, 17 sample MC	16 µl
<b>EHS3400-CMT34-1.0</b>	1 mm thick, 34 sample MC	6 µl
<b>EHS3400-CMT17-1.5</b>	1.5 mm thick, 17 sample MC	24 µl
<b>EHS3400-CMT34-1.5</b>	1.5 mm thick, 34 sample MC	9 µl

### Replacement parts & Accessories

Code	Description
<b>EHS3400-TRAY</b>	UVT gel tray, 15x15 cm, with gasketed end gates
<b>EHS3410-TRAY20</b>	UVT gel tray, 15x20 cm, with gasketed end gates
<b>EHS3410-TRAY25</b>	UVT gel tray, 15x25 cm , with gasketed end gates
<b>EHS3400-DAM</b>	Casting Dam for 15cm Wide Gel Trays
<b>EHS3400-GATE</b>	End Gates, includes gasket (set of 2)
<b>EHS3400-GASKET</b>	Replacement Gasket (set of 2)

<b>Gel dimensions</b>	20x25cm
<b>Buffer volume</b>	1850ml
<b>Gel volume (at 0.5cm)</b>	250ml
<b>Sample Capacity</b>	168
<b>Comb Slots</b>	6
<b>Equidistant sample runs</b>	1, 2, 3 or 4
<b>Run lengths</b>	5.5, 7.5, 11.4 and 23,2 cm
<b>Unit Dimensions</b>	29x37.5x10.5 cm
<b>Running condition</b>	170V at 5V/cm
<b>UV transmissible gel tray</b>	
<b>ExpressCast</b>	
<b>Warranty</b>	36 months

**Recommended power supply**  
**EV2650**  
**EV3150**



## ● Description

The EHS3500 can accommodate a large range of sample and run length combinations for the ultimate in versatility. The unit is manufactured with a levelling base that includes a built-in level and 3-point levelling using nylon screws for convenient level adjustment.

### Features

- ExpressCast™ gel casting technology.
- Heavy duty lower buffer chamber and Interlock safety lid with attached leads.
- Buffer chamber with color coded, sealed platinum electrodes and non-slip rubber feet.
- UV transmissible gel tray with 6 comb slots.
- Safety cover with attached retractable-sheathed power cords.

## ● Ordering codes

### Complete System

Code	Description
<b>EHS3500-SYS</b>	Wide long horizontal unit UVT gel tray 20x25 cm, end gates levelling screws, bubble level 1 comb: 16 sample, 1.5mm 1 comb: 24 sample, 1.5mm 1 comb: 36 sample, 1.5mm

### Combs

Code	Description	Sample volume
<b>EHS3500-C8-1.0</b>	1 mm thick, 8 sample	25 µl
<b>EHS3500-C12-1.0</b>	1 mm thick, 12 sample	20 µl
<b>EHS3500-C16-1.0</b>	1 mm thick, 16 sample	14 µl
<b>EHS3500-C20-1.0</b>	1 mm thick, 20 sample	38 µl
<b>EHS3500-C24-1.0</b>	1 mm thick, 24 sample	31 µl
<b>EHS3500-C28-1.0</b>	1 mm thick, 28 sample	22 µl
<b>EHS3500-C32-1.0</b>	1 mm thick, 32 sample	22 µl
<b>EHS3500-C36-1.0</b>	1 mm thick, 36 sample	22 µl
<b>EHS3500-C8-1.5</b>	1.5 mm thick, 8 sample	25 µl
<b>EHS3500-C12-1.5</b>	1.5 mm thick, 12 sample	20 µl
<b>EHS3500-C16-1.5</b>	1.5 mm thick, 16 sample	14 µl
<b>EHS3500-C20-1.5</b>	1.5 mm thick, 20 sample	38 µl
<b>EHS3500-C24-1.5</b>	1.5 mm thick, 24 sample	31 µl
<b>EHS3500-C28-1.5</b>	1.5 mm thick, 28 sample	22 µl
<b>EHS3500-C32-1.5</b>	1.5 mm thick, 32 sample	22 µl
<b>EHS3500-C36-1.5</b>	1.5 mm thick, 36 sample	22 µl

### Microtiter Combs

Code	Description	Sample volume
<b>EHS3500-CMT18-1.0</b>	1 mm thick, 18 sample MC	16 µl
<b>EHS3500-CMT21-1.0</b>	1 mm thick, 21 sample MC	6 µl
<b>EHS3500-CMT42-1.0</b>	1 mm thick, 42 sample MC	6 µl
<b>EHS3500-CMT18-1.5</b>	1.5 mm thick, 18 sample MC	24 µl
<b>EHS3500-CMT21-1.5</b>	1.5 mm thick, 21 sample MC	9 µl
<b>EHS3500-CMT42-1.5</b>	1.5 mm thick, 42 sample MC	9 µl

### Preparative Combs

Code	Description	Sample volume
<b>EHS3500-PREP</b>	1.5mm, preparative	142 µl

### Replacement parts & Accessories

Code	Description
<b>EHS3500-TRAY</b>	UVT gel tray, 20x25 cm, with gasketed end gates
<b>EHS3500-DAM</b>	Casting Dam for 20cm Wide Gel Trays
<b>EHS3500-GATE</b>	End Gates, includes gasket (set of 2)
<b>EHS3500-GASKET</b>	Replacement Gasket (set of 2)



<b>Gel dimensions</b>	23.5x14cm
<b>Buffer volume</b>	1700
<b>Gel volume (at 0.5cm)</b>	161ml
<b>Sample Capacity</b>	200
<b>Comb Slots</b>	4
<b>Unit Dimensions</b>	32x26x10.5 cm
<b>Running condition</b>	120V at 5V/cm
<b>UV transmissible gel tray</b>	
<b>ExpressCast</b>	
<b>Warranty</b>	36 months

**Recommended power supply**  
**EV2650**  
**EV3150**



## ● Description

The EHS3500 is our “double-wide” midi gel unit. Ideal for quick analysis of larger quantities of samples. The unit is manufactured with a levelling base that includes a built-in level and 3-point levelling using nylon screws for convenient level adjustment.

### Features

ExpressCast™ gel casting technology.

Heavy duty lower buffer chamber and Interlock safety lid with attached leads.

Buffer chamber with color coded, sealed platinum electrodes and non-slip rubber feet.

UV transmissible gel tray and 4 comb slots.

Safety cover with attached retractable-sheathed power cords.

## ● Ordering codes

### Complete System

Code	Description
<b>EHS3600-SYS</b>	Wide horizontal unit UVT gel tray 23.5x14 cm, end gates levelling screws, bubble level 4 combs: 50 sample, 1.5mm

### Microtiter Combs

Code	Description	Sample volume
<b>EHS3600-CMT25-1.0</b>	1 mm thick, 25 sample MC	16 µl
<b>EHS3600-CMT26-1.0</b>	1 mm thick, 26 sample MC	6 µl
<b>EHS3600-CMT40-1.0</b>	1 mm thick, 50 sample MC	6 µl
<b>EHS3600-CMT25-1.5</b>	1.5 mm thick, 25 sample MC	24 µl
<b>EHS3600-CMT26-1.5</b>	1.5 mm thick, 26 sample MC	9 µl
<b>EHS3600-CMT50-1.5</b>	1.5 mm thick, 50 sample MC	9 µl

### Replacement parts & Accessories

Code	Description
<b>EHS3600-TRAY</b>	UVT gel tray, 23.5x14 cm, with gasketed end gates
<b>EHS3600-DAM</b>	Casting Dam for 20cm Wide Gel Trays
<b>EHS3600-GATE</b>	End Gates, includes gasket (set of 2)
<b>EHS3600-GASKET</b>	Replacement Gasket (set of 2)

<b>Gel dimensions</b>	23.5x25cm 23.5x14cm
<b>Buffer volume</b>	1700
<b>Gel volume (at 0.5cm)</b>	161ml
<b>Sample Capacity</b>	500
<b>Comb Slots</b>	14
<b>Equidistant sample runs</b>	1, 2, 3, 4, 5 or 10
<b>Run lengths</b>	2, 4.4, 5.5, 7.5, 11.4 & 23,2 cm
<b>Unit Dimensions</b>	32x26x10.5 cm
<b>Running condition</b>	170V at 5V/cm
<b>UV transmissible gel tray</b>	
<b>ExpressCast</b>	
<b>Automatic Buffer Recirculation (EHS3660 only)</b>	
<b>Warranty</b>	36 months

**Recommended power supply**  
EV2650  
EV3150



**EHS3660-SYS**

### ● Description

The EHS3610 and EHS3660 system is capable of processing large numbers of samples quickly and efficiently. Two unit configurations are available including the new EHS3660 which includes integrated automatic buffer recirculation for improved performance. The unit is manufactured with a levelling base that includes a built-in level and 3-point levelling using nylon screws for convenient level adjustment.

#### Features

- ExpressCast™ gel casting technology.
- Heavy duty lower buffer chamber and Interlock safety lid with attached leads.
- Buffer chamber with color coded, sealed platinum electrodes and non-slip rubber feet.
- UV transmissible gel tray with 14 comb slots.
- Safety cover with attached retractable-sheathed power cords.

### ● Ordering codes

#### Complete System

Code	Description
<b>EHS3610-SYS</b>	Maxi horizontal unit UVT gel tray 23x25 cm, end gates levelling screws, bubble level 2 combs: 25 sample, 1.5mm 2 combs: 50 sample. 1.5mm
<b>EHS3660-SYS</b>	Maxi horizontal unit UVT gel tray 23x25 cm, end gates levelling screws, bubble level 2 combs: 25 sample, 1.5mm 2 combs: 50 sample. 1.5mm

#### Microtiter Combs

Code	Description	Sample volume
<b>EHS3600-CMT25-1.0</b>	1 mm thick, 25 sample MC	16 µl
<b>EHS3600-CMT26-1.0</b>	1 mm thick, 26 sample MC	6 µl
<b>EHS3600-CMT40-1.0</b>	1 mm thick, 50 sample MC	6 µl
<b>EHS3600-CMT25-1.5</b>	1.5 mm thick, 25 sample MC	24 µl
<b>EHS3600-CMT26-1.5</b>	1.5 mm thick, 26 sample MC	9 µl
<b>EHS3600-CMT50-1.5</b>	1.5 mm thick, 50 sample MC	9 µl

#### Replacement parts & Accessories

Code	Description
<b>EHS3600-TRAY</b>	UVT gel tray, 23.5x14 cm, with gasketed end gates
<b>EHS3610-TRAY</b>	UVT gel tray, 23.5x25 cm, with gasketed end gates
<b>EHS3600-DAM</b>	Casting Dam for 20cm Wide Gel Trays
<b>EHS3600-GATE</b>	End Gates, includes gasket (set of 2)
<b>EHS3600-GASKET</b>	Replacement Gasket (set of 2)



**EHS3610-SYS**

<b>Gel dimensions</b>	23.5x40cm 23.5x25cm 23.5x14cm
<b>Buffer volume</b>	1700
<b>Gel volume (at 0.5cm)</b>	161ml
<b>Sample Capacity</b>	600
<b>Comb Slots</b>	12
<b>Equidistant sample runs</b>	1, 2, 3, 4, 6 or 12
<b>Run lengths</b>	3, 6.3, 8.9, 12.9, 19.5 & 35 cm
<b>Unit Dimensions</b>	32x26x10.5 cm
<b>Running condition</b>	120V at 5V/cm
<b>UV transmissible gel tray</b>	
<b>ExpressCast</b>	
<b>Buffer recirculation ports</b>	
<b>Warranty</b>	36 months

**Recommended power supply**  
EV2650, EV3150



## ● Description

The EHS3620 can handle both very large numbers of samples, and long runs as well, providing both high resolution and high through-put. The EHS3620 device includes buffer recirculation ports for connection to external buffer recirculation devices, and features Galileo's ExpressCast™ casting system for in-tray tapeless casting. The unit is manufactured with a levelling base that includes a built-in level and 3-point levelling using nylon screws for convenient level adjustment.

### Features

- ExpressCast™ gel casting technology.
- Heavy duty lower buffer chamber and Interlock safety lid with attached leads.
- Buffer chamber with color coded, sealed platinum electrodes and non-slip rubber feet.
- UV transmissible gel tray with 12 comb slots.
- Safety cover with attached retractable-sheathed power cords.
- Wide range of combs and accessories available.

## ● Ordering codes

### Complete System

Code	Description
<b>EHS3620-SYS</b>	Wide horizontal unit UVT gel tray 23x40 cm, end gates levelling screws, bubble level 2 combs: 25 sample, 1.5mm 2 combs: 50 sample, 1.5mm

### Microtiter Combs

Code	Description	Sample volume
<b>EHS3600-CMT25-1.0</b>	1 mm thick, 25 sample MC	16 µl
<b>EHS3600-CMT26-1.0</b>	1 mm thick, 26 sample MC	6 µl
<b>EHS3600-CMT40-1.0</b>	1 mm thick, 50 sample MC	6 µl
<b>EHS3600-CMT25-1.5</b>	1.5 mm thick, 25 sample MC	24 µl
<b>EHS3600-CMT26-1.5</b>	1.5 mm thick, 26 sample MC	9 µl
<b>EHS3600-CMT50-1.5</b>	1.5 mm thick, 50 sample MC	9 µl

### Replacement parts & Accessories

Code	Description
<b>EHS3600-TRAY</b>	UVT gel tray, 23.5x14 cm, with gasketed end gates
<b>EHS3610-TRAY</b>	UVT gel tray, 23.5x25 cm, with gasketed end gates
<b>EHS3620-TRAY</b>	UVT gel tray, 23.5x40 cm, with gasketed end gates
<b>EHS3600-DAM</b>	Casting Dam for 20cm Wide Gel Trays
<b>EHS3600-GATE</b>	End Gates, includes gasket (set of 2)
<b>EHS3600-GASKET</b>	Replacement Gasket (set of 2)